

Electronic Throttle Controls

Product Benefits

- Easy installation
- Flexible mounting and positioning
- Robust, durable design
- Smooth driver operation
- Long-lasting programmable Hall effect sensor
- Adaptable to a wide range of electronic throttle applications



Specifications

Global 1 Suspended

Functional

- Actuation Force applied perpendicular to the pedal pad surface and at a point 5.6 in (142 mm) from the centerline of the pivot axis
- Initial Movement > 2 lbs (9 N)
- Full Throttle < 8 lbs (35 N)
- Rotational Angle 16-20°

Weight of Pedal

0.7 lbs (.32 Kg)

Validation

- Full Strokes Cycles - 10 million
- Full Environmentally Tested
- EMC Tested to 150v/m
- 100% End-of-the-line Testing on all assemblies

Electrical Specifications

- Programmable Hall Sensor
- Dual Analog or PWM

Floor Mounted

Functional

- Actuation Force applied perpendicular to the treadle surface and at a point 7.4 in (160 mm) from the centerline of the pivot axis
- Initial Movement > 2 lbs (9 N)
- Full Throttle < 11.5 lbs (51 N)
- Rotational Angle 16-20°

Weight of Pedal

1.0 lbs (.46 Kg)

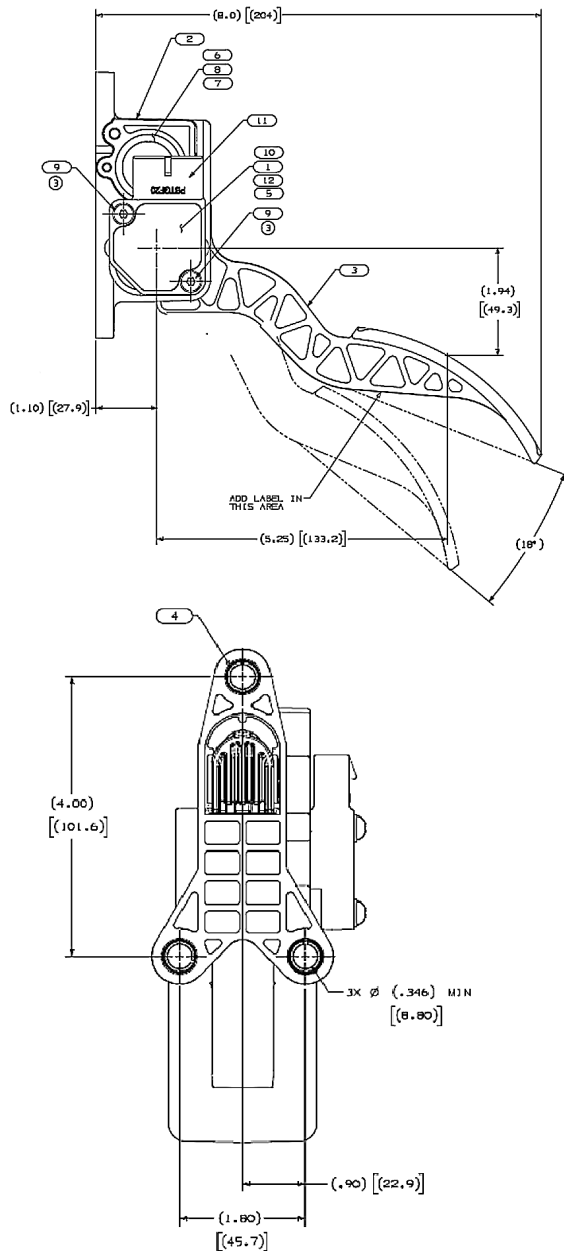
Validation

- Full Strokes Cycles - 10 million
- Full Environmentally Tested
- EMC Tested to 150v/m
- 100% End-of-the-line Testing on all assemblies

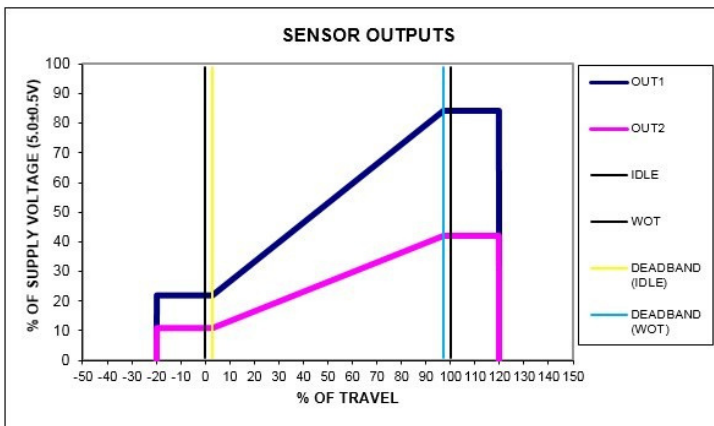
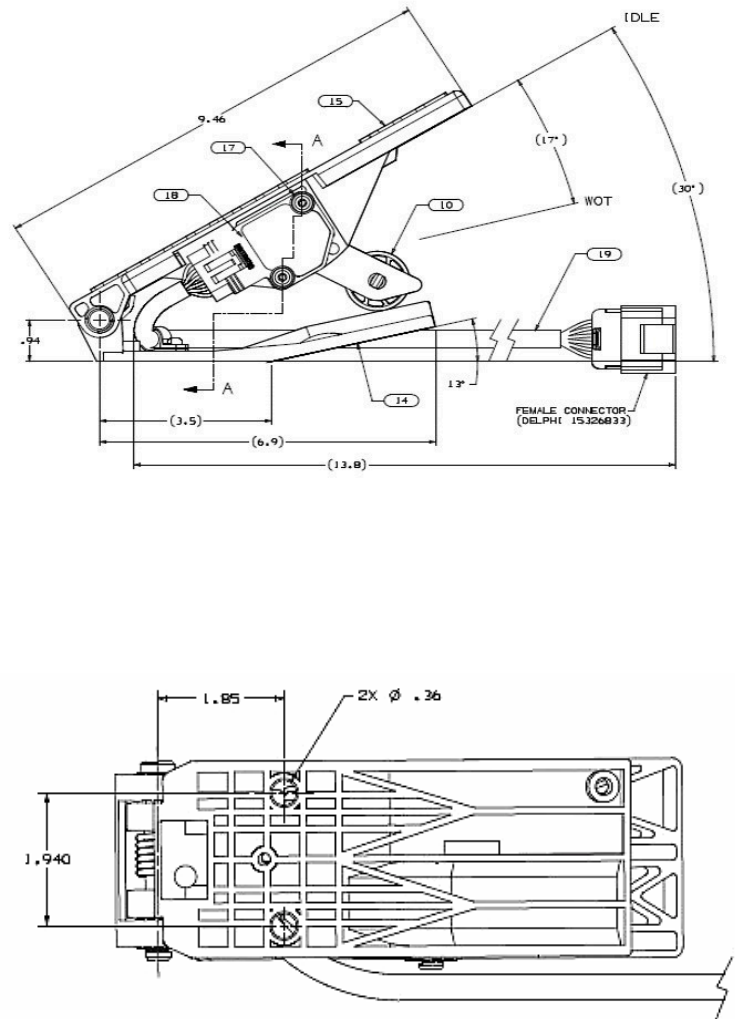
Electrical Specifications

- Programmable Hall Sensor
- Dual Analog or PWM

Global 1 Suspended



Floor Mounted



Electronic Throttle Controls
 Contact us about your application
www.orschelnproducts.com